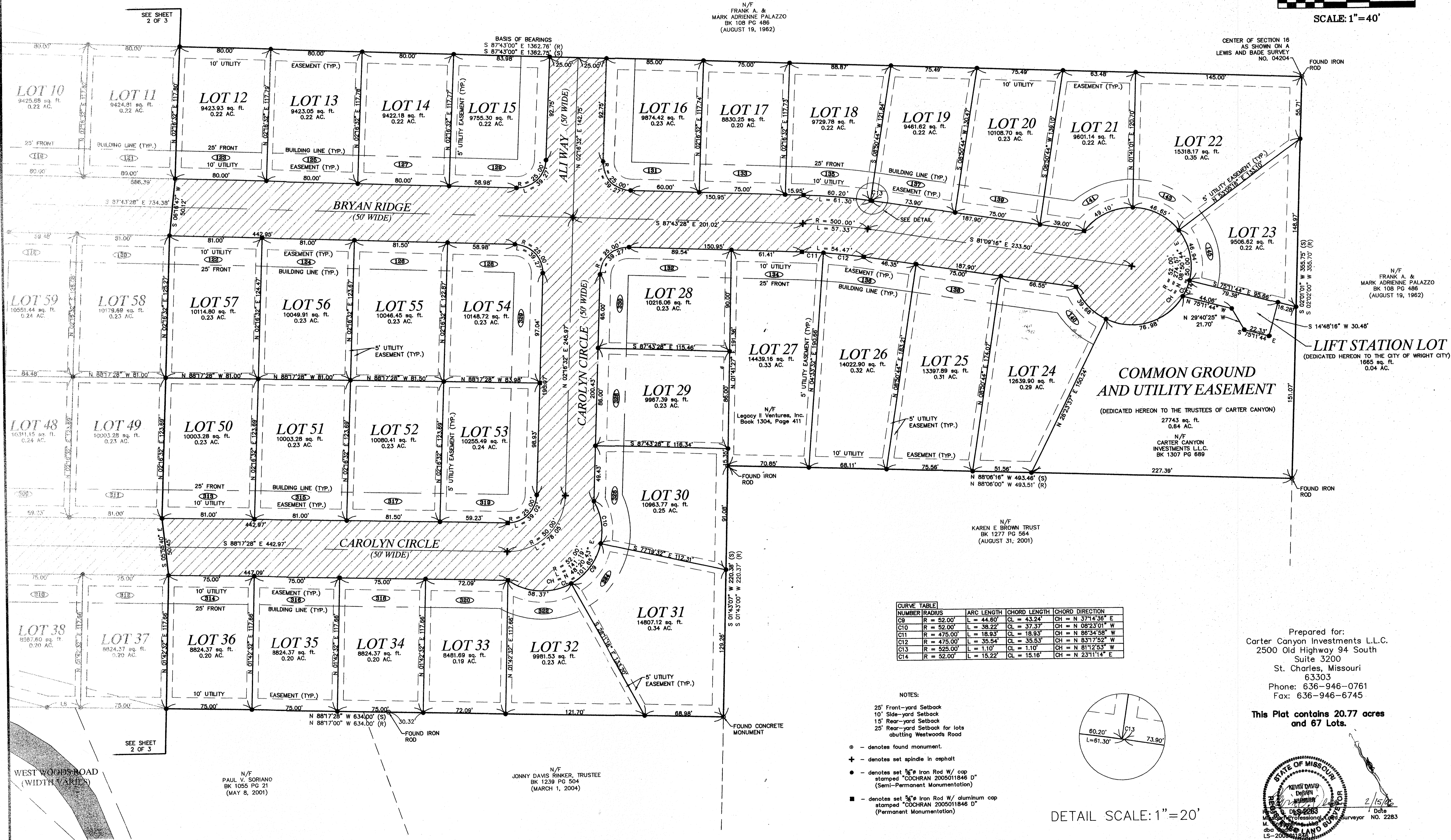
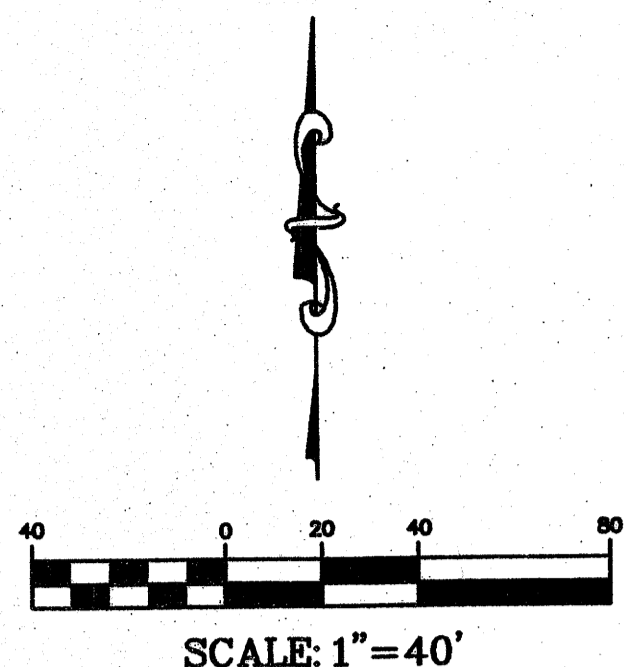


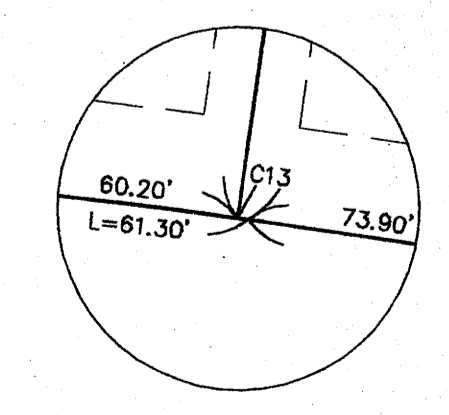
CARTER CANYON

BEING PART OF THE NORTH ONE-HALF OF THE SOUTHWEST QUARTER OF SECTION 16, TOWNSHIP 47 NORTH, RANGE 1 WEST RECORDED IN BOOK 1304, PAGE 411 IN THE CITY OF WRIGHT CITY, IN WARREN COUNTY, MISSOURI



CURVE TABLE	NUMBER	RADIUS	ARC LENGTH	CHORD LENGTH	CHORD DIRECTION
C9	R = 50.00'	L = 44.60'	CL = 43.24'	CH = N 37°14'36" E	
C10	R = 52.00'	L = 38.22'	CL = 37.37'	CH = N 08°23'01" W	
C11	R = 475.00'	L = 18.93'	CL = 18.93'	CH = N 86°34'58" W	
C12	R = 475.00'	L = 35.54'	CL = 35.53'	CH = N 83°17'52" W	
C13	R = 525.00'	L = 1.10'	CL = 1.10'	CH = N 81°12'53" W	
C14	R = 52.00'	L = 15.22'	CL = 15.16'	CH = N 23°11'14" E	

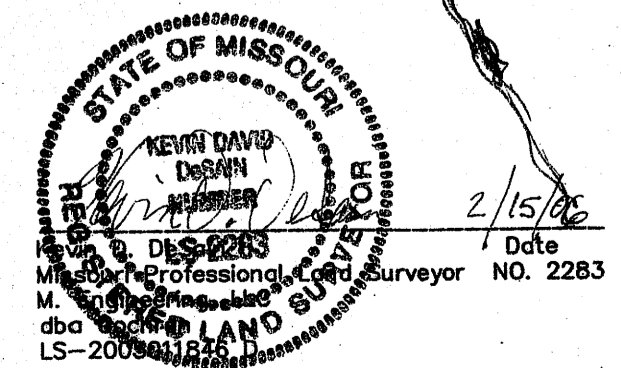
- NOTES:
- - denotes found monument.
 - + - denotes set spindle in asphalt
 - - denotes set 5/8" Iron Rod W/ cap stamped "COCHRAN 2005011846 D" (Semi-Permanent Monumentation)
 - - denotes set 5/8" Iron Rod W/ aluminum cap stamped "COCHRAN 2005011846 D" (Permanent Monumentation)



DETAIL SCALE: 1" = 20'

Prepared for:
Carter Canyon Investments L.L.C.
2500 Old Highway 94 South
Suite 3200
St. Charles, Missouri
63303
Phone: 636-946-0761
Fax: 636-946-6745

This Plat contains 20.77 acres and 67 Lots.



636-337-4574 (cell)
636-337-0760 (fax)
mailed@cochrans.com

COCHRAN

- Civil Engineering
- Land Surveying
- Architecture
- Site Development
- General Consulting
- Master Planning

8 East Main Street
Warrensburg, Missouri 63385

The platting of this plat is the responsibility of the contractor and the platting engineer. The platting engineer shall call 1-800-368-4772 for utility location information.

All OSHA rules and regulations established for the type of construction required by these platting conditions shall be followed (i.e., trenching, shoring, etc.).

CARTER CANYON SUBDIVISION
CARTER CANYON INVESTMENTS L.L.C.
WRIGHT CITY, MISSOURI

DATE: APR 11, 2006	DATE: FEB 15, 2006
BY: JMM	BY: KDD
SCALE: 1" = 40'	SCALE: 1" = 40'
PLAT NO: 04-1964	PLAT NO: 04-1964
3 OF 3	