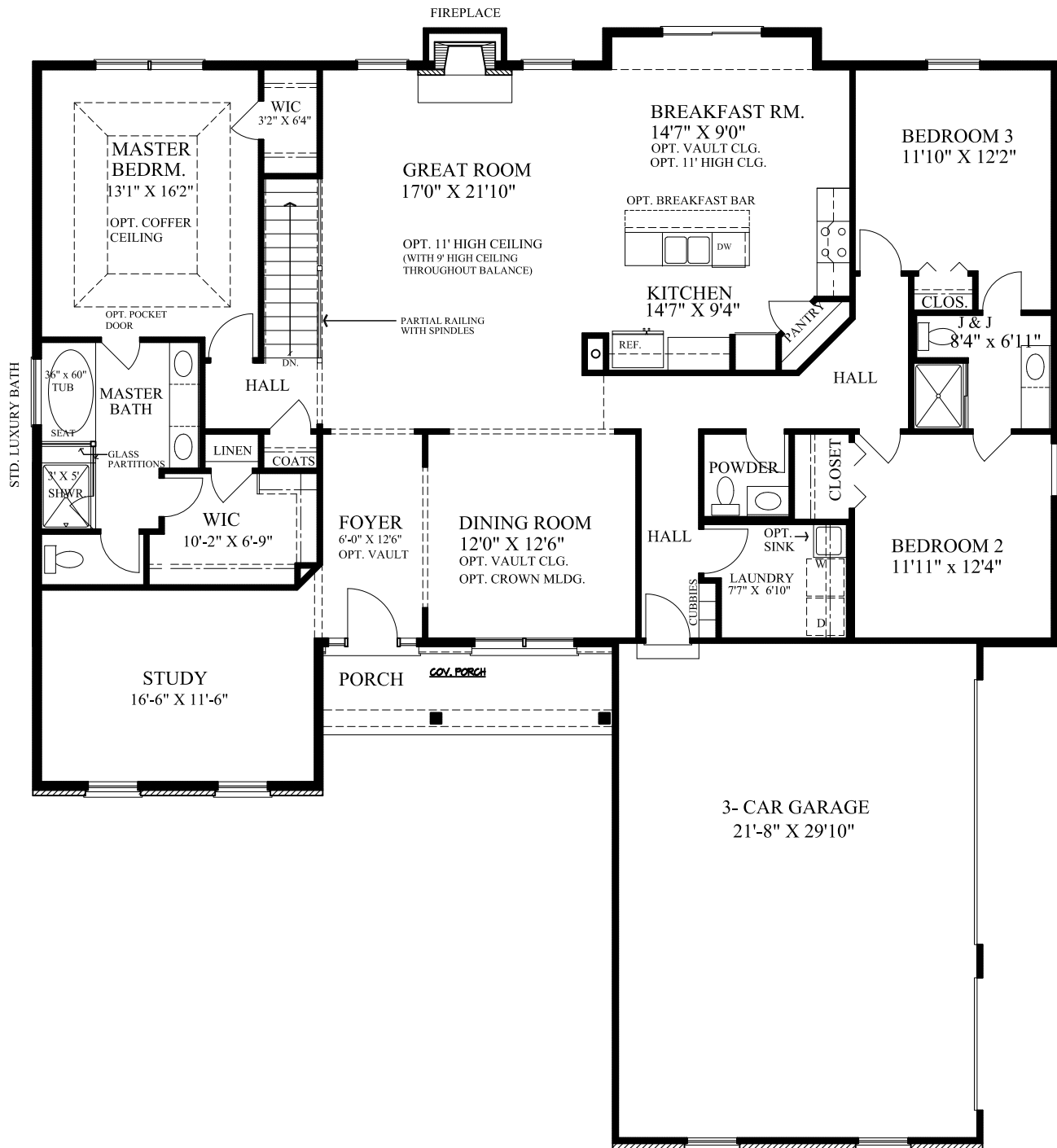


# Redwood II

with Jack & Jill Option



## FIRST FLOOR PLAN

2365 (2444 WITH OPT. HEARTH RM.)  
 STANDARD 8'-0" HIGH CEILING  
 OPTIONAL 9'-0" HIGH CEILING

ALSO AVAILABLE  
 LUXURY MASTER BATH

Due to evolutionary changes in our design process, there may be variations in room dimensions, door swings, and window and door locations. We reserve the right to substitute materials of comparable quality. Standard features vary by community. Some features shown as standard may be optional. Some features shown as optional may be standard. Renderings may reflect optional dormers, railings, entry and garage door styles. See Sales Manager for standard and optional features for each community. Copyright 6/15/2021

